

FOR CO-ORDINATION ONLY

Cyrano de Bergerac
Act 1
Centre Line Section
Old Auditorium
Set Designer: Chengyan Boon
Advisor: Robert Gardiner
24/04/2014
Scale: 1/4" = 1' - 0"

No.	Date	Description
0	2009-08-18	Issued For Lighting Inventory Requirements

Revisions:

DOUGLAS WELCH DESIGN
ASSOCIATES LIMITED
1 West 7th Avenue
Vancouver BC
Canada V6V 1T4
Phone: (604) 874-0525
Fax: (604) 874-0523
info@w-d.com

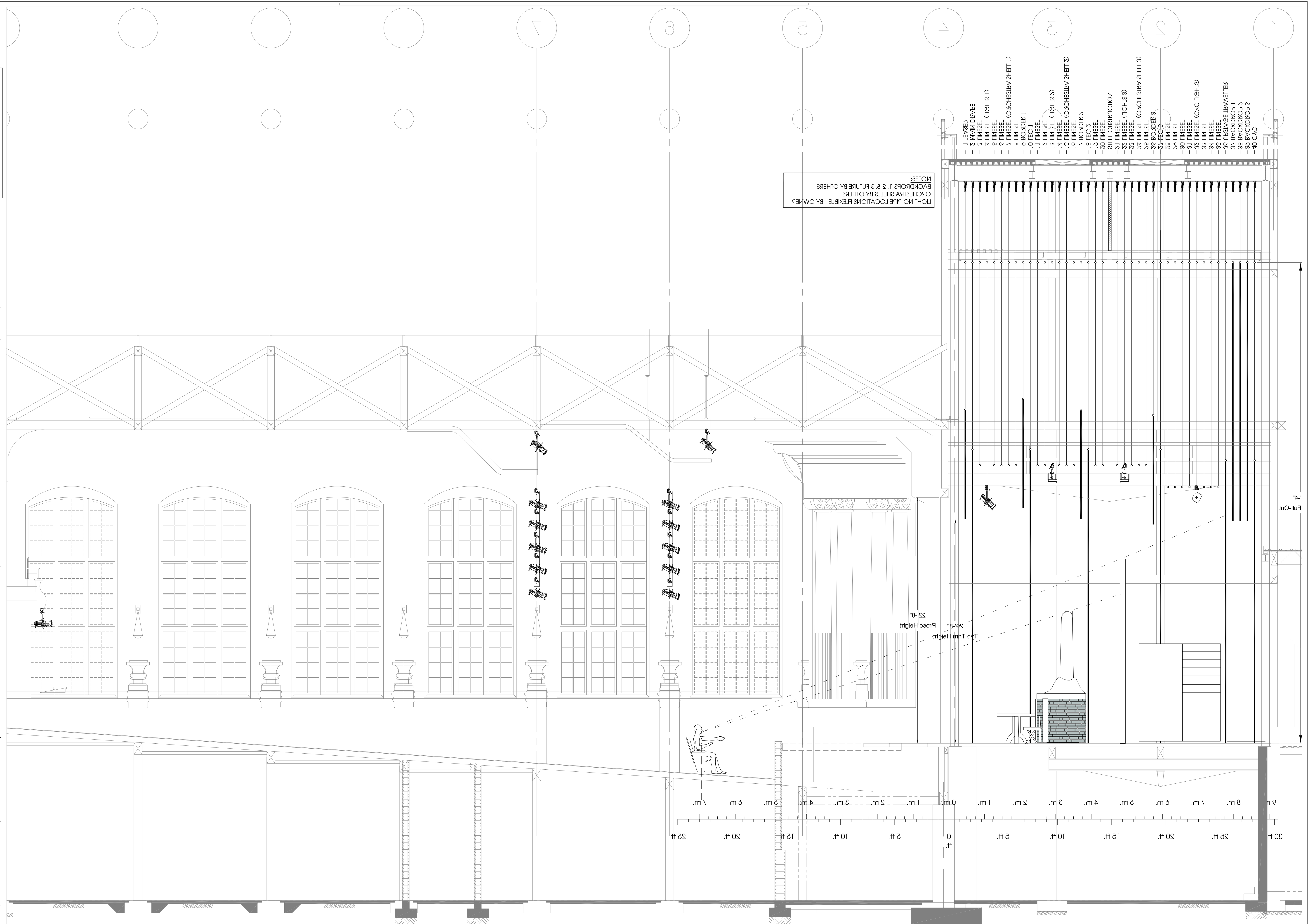
Copyright Reserved
These drawings and specifications and the reuse, design and arrangements represented therein are and shall at all times remain the exclusive property of Douglas Welch Design and no part of this drawing is to be reproduced or transmitted in any form or by any means electronic or mechanical, including photocopying, recording, or by any information storage and retrieval system, without written consent. Violation of these drawings and specifications shall constitute copyright infringement and will be prosecuted to the fullest extent of the law. The user is responsible for all dimensions and conditions on this job including compliance with applicable codes and regulations. The user shall be informed of any variations from the dimensions and conditions shown on this drawing.

Project:
UBC Old Auditorium
Renovation, 2007

Drawing Title:
Stage Drive
Section

Date: 2009-07-03
Drawn: EM
Checked: RH
Approved: PH
Phase: SD

Drawing No.: TR-109



NOTES:
LIGHTING PIPE LOCATIONS FLEXIBLE - BY OWNER
BACKDROPS 1, 2 & 3 FUTURE BY OTHERS
ORCHESTRA SHEETS BY OTHERS

- 1 LEVELS
- 2 WYM DRYBE
- 3 PIPESEL
- 4 PIPESEL (TCH12 1)
- 5 PIPESEL
- 6 PIPESEL
- 7 PIPESEL (ORCHESTRY SHEET 1)
- 8 BOBDELS 1
- 9 BOBDELS 1
- 10 FEQ 1
- 11 PIPESEL
- 12 PIPESEL (TCH12 3)
- 13 PIPESEL (TCH12 3)
- 14 PIPESEL (ORCHESTRY SHEET 3)
- 15 BOBDELS 3
- 16 FEQ 3
- 17 PIPESEL
- 18 FEQ 3
- 19 FEQ 3
- 20 FEQ 3
- 21 FEQ 3
- 22 FEQ 3
- 23 FEQ 3
- 24 FEQ 3
- 25 FEQ 3
- 26 FEQ 3
- 27 FEQ 3
- 28 FEQ 3
- 29 FEQ 3
- 30 FEQ 3
- 31 FEQ 3
- 32 FEQ 3
- 33 FEQ 3
- 34 FEQ 3
- 35 FEQ 3
- 36 FEQ 3
- 37 FEQ 3
- 38 FEQ 3
- 39 FEQ 3
- 40 C.A.C.